

TEST REPORT

Task Number #251011

Testing Received 11th Oct 2025

SAMPLE RETATRUTIDE 32 PEN

MANUFACTURER www.bodypharm.me

BATCH RET3254

SAMPLE DESCRIPTION See picture/s attached

TESTS REQUESTED Assessment of cartridge

RESULTS



Concentration of cartridge 14.06mg/ml - Total API 33.74mg per 2.4ml

Purity 98.75%

Dimer of related proteins N/A

COMMENTS:

Analysis Conducted 11th Oct 2025

Signature

SAMPLE

RETATRUTIDE 32 PEN

MANUFACTURER

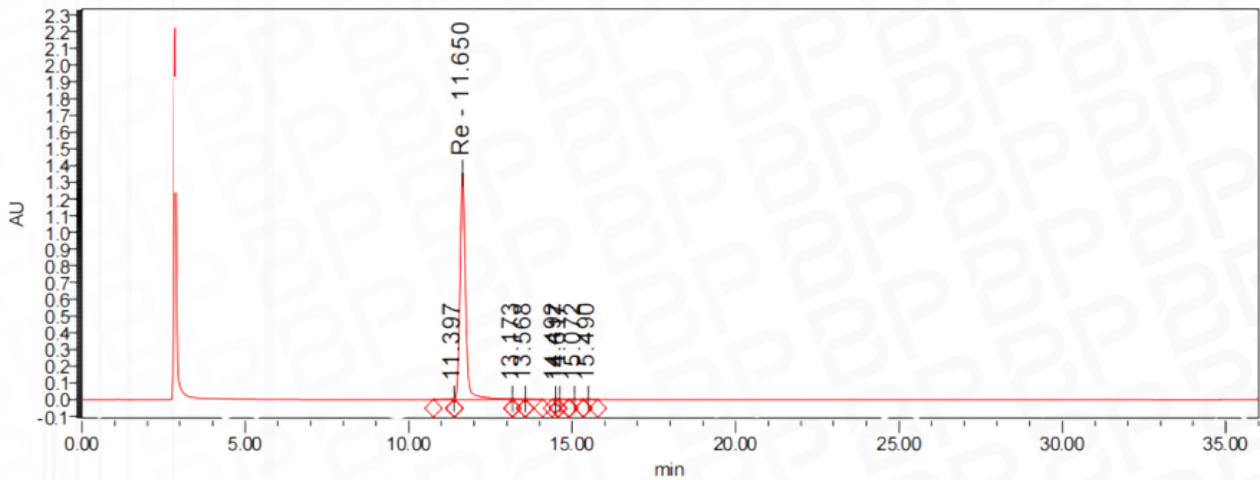
www.bodypharm.me

ANALYSIS

HPLC

Sample name C-Re32-2.4-20251011

Chromatogram



Results

| Peak name | Retention time (min) | Peak rel area(%) |
|-----------|----------------------|------------------|
| 1 | 11.397 | 0.29 |
| 2 Re | 11.650 | 98.75 |
| 3 | 13.173 | 0.36 |
| 4 | 13.568 | 0.28 |
| 5 | 14.492 | 0.06 |
| 6 | 14.617 | 0.09 |
| 7 | 15.072 | 0.09 |
| 8 | 15.490 | 0.07 |

Analysis Conducted 11th Oct 2025

Signature

MANUFACTURER

www.bodypharm.me

Certificate of Analysis

| | | | |
|---|---|-------------------------|------------|
| Name | C-Re32 | specs | 32mg/2.4ml |
| Lot No. | C-Re32-2.4-20251011 | Manufacture Date | 2025.10.11 |
| Storage | Store in a dark place and in a sealed container at 2-8°C. Do not freeze. | | |
| Test Items | Acceptance Criteria | Test Results | |
| 【Description】 | | | |
| Appearance | Colorless to light yellow solution | Conforms | |
| 【Identification】 | | | |
| HPLC Identification | The retention time of the major peak of the Sample solution corresponds to that of the Standard solution, as obtained in the Assay. | Conforms | |
| 【Test】 | | | |
| Purity | NLT 95.0% | 98.8% | |
| Related Substances | Individual impurity NMT1.0% | 0.36% | |
| | Total impurities NMT5.0% | 1.25% | |
| Bacterial endotoxins | NMT 20 EU/mg | Less than 5 EU/mg | |
| pH | 7.0~8.0 | 7.2 | |
| Phenol Content | 4.5mg/mL~5.5mg/mL | 5.0mg/mL | |
| Sterility Tests | Meet Requirements | Conforms | |
| 【Assay】 | | | |
| Content | ≥12.7mg/ml | 14.06mg/ml | |
| Conclusion: The test results comply with the in-house specification. | | | |

Signature

